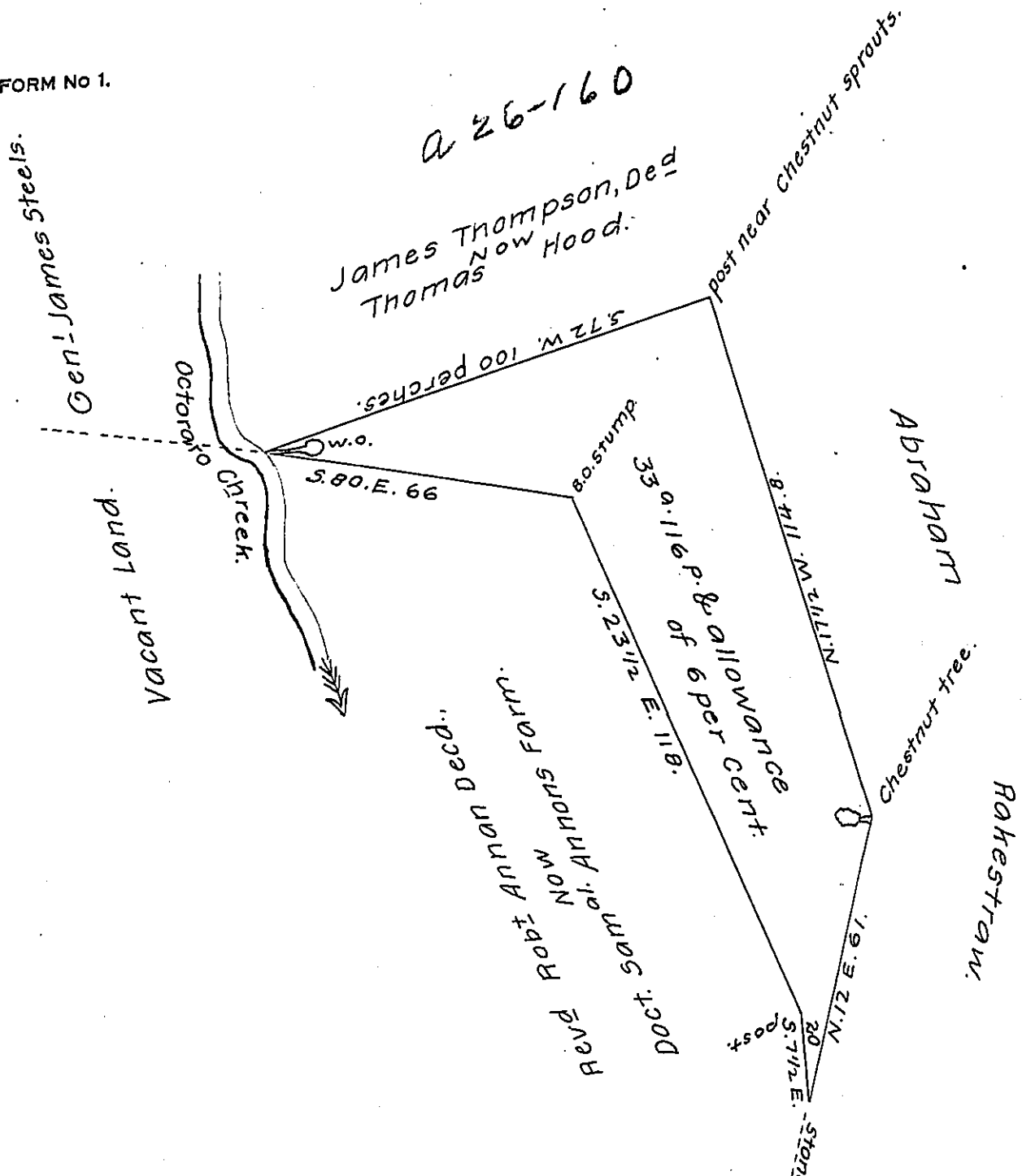


FORM NO 1.

A 26-160



The above Draught represents a tract of land situate in Westfallowfield Township Chester County Containing thirty three acres and one hundred and sixteen perches and allowance of six per Cent Surveyed to Samuel Annon, M.D. by this warrant dated Nov. 8th. 1838.

By Jesse Boans, D.S.

Jno Taylor, Esq.,
Surveyor General.

IN TESTIMONY that the above is a copy of the original remaining on file in the Department of Internal Affairs of Pennsylvania, made conformably to an Act of Assembly approved the 16th day of February, 1833, I have hereunto set my Hand and caused the Seal of said Department to be affixed at Harrisburg, this twenty fourth day of September, 1907.

Henry Howell
Secretary of Internal Affairs.